



area

Nagaoka

learn the lessons of the disaster and the history of restoration and reconstruction



Learning about the experiences of the Chuetsu Earthquake and other disasters to raise awareness of disaster prevention

Evacuation behavior after the Great Chuetsu Earthquake of 2004, experiences of shelter life and shelter goods, and a special exhibition (Disaster Prevention in the Future) on the theme of preparations that can be made on a daily basis based on case studies. It is mainly used for disaster prevention learning, mainly for generations who do not know the Great Chuetsu Earthquake, such as disaster prevention crafts using familiar things, disaster prevention workshops to think about the best decisions in disaster areas, and video archive theater.

experience menu

- Experience life in an evacuation center, try out goods at an evacuation center
- Disaster prevention crafts using familiar items
- Disaster prevention workshop to think about the best decisions in a disaster area
- Video archive theater for learning about disasters



30 people  
(Maximum 60 people)



all year



10:00-18:00

Closed Saturdays, Sundays, public holidays, year-end and New Year holidays

Free (exhibition guides, study programs, etc. are subject to a fee) No parking lot (bus boarding/

disembarking space available)

2-6 Otedori, Nagaoka Phoenix Ote East 2F 0258-39-5525

<http://www.c-marugoto.jp/nagaoka/>

Chuetsu Memorial Corridor Kawaguchi Kizuna Museum

area

river mouth



Continuing the story of bonds

In Kawaguchi, the epicenter of the Chuetsu Earthquake that occurred in 2004 (Heisei 16), we introduce the story of "bonds" that sprouted during the restoration and reconstruction. We will also convey the importance of the new "bonds" that will sprout in the future. We will respond to your request, such as a disaster prevention experience program (charged). Exhibits/History of Reconstruction (Chuetsu Earthquake Record Chronological Table in Kawaguchi Area)/Stories of Bonds between 5000 People (12 iPads)/Map of Kawaguchi Area (1/5000)

experience menu

- Disaster prevention experience program



30 people



all year



10:00-17:00

Closed Tuesdays, New Year holidays

Free admission (learning programs are charged)

Please inquire about the parking lot (parking lot in the sports park, free of charge)

Nagaoka Kawaguchi Nakayama 1441

0258-89-3620 <https://m.facebook.com/kawaguchipark>

Yamakoshi Reconstruction Exchange Center Orataru

area

Yamakoshi



Learn about the history of Yamakoshi restoration and reconstruction

Photographs, videos, and projections of Yamakoshi, which has overcome the devastating damage caused by the Great Chuetsu Earthquake of October 23, 2004, and continues to move toward recovery and reconstruction. Introduced by mapping.

Tour menu

- Yamakoshi Guide Recommended Course (2 hours)
- Yamakoshi Guide Premium Course (2.5 hours) Disaster
- Mitigation Education Program (2 hours)
- Storyteller (45 minutes to 1 hour)

\*Please refer to the website for details of each course, please.



40 people



all year



1st floor 9:00-17:00 2nd floor 10:00-16:00

Closed Mondays, New Year holidays

Free admission (learning programs are charged)

Free parking for 8 large buses

2835 Takezawako, Yamakoshi, Nagaoka City

0258-41-1203 <https://reserve.orataru.net/disaster-mitigation/120/>



Peace culture Learn about the air raids of Nagaoka and think about the preciousness of

peaceMichi -no-Eki Nagaoka Fireworks MuseumA museum

area

Nagaoka



where you can learn about the thoughts that Nagaoka people put into their fireworks

In addition to the dome theater where you can experience the charm of Nagaoka fireworks with powerful sound and images, there is a huge screen where you can enjoy fireworks games in the exhibition room, the culture and history of Nagaoka fireworks, the mechanism and types of fireworks. There are exhibits where you can learn about The museum shop sells goods related to Nagaoka Fireworks. It is a facility full of attractions where you can enjoy learning, playing, and enjoying Nagaoka fireworks all year round.

[Dome theater screening

time] 11:00 - 11:30 13:15 - 13:45 14:45 - 15:15

16:15 - 16:45



Dome Theater 104 seats Regular holiday Every  
 all year  
 10:00-17:30  
 Wednesday (if Wednesday is a public holiday, the weekday after the next day)\*12/31/1/2 +Facility inspection day (twice a year)  
**Admission is free**  
 (480) yen Elementary and junior high school students 300 (240) yen High school students and older 600  
 Theater admission \* ( ) is for groups of 20 or more people  
 282 parking lots (including 18 large ones)  
 707 Kita-cho, Nagaoka City 0258-86-7766  
<https://nagaoka-hanabikan.niigata.jp/>

fireworks lecture

area

Nagaoka



Nagaoka fireworks and their history

The Nagaoka Festival Grand Fireworks Festival is known as one of Japan's three major fireworks festivals, but it has survived two disasters and has been revived. August 1

The Nagaoka Festival, which runs from 1st to 3rd, has its origins in the Nagaoka

Reconstruction Festival, which began in 1946, the year after the Nagaoka Air Raid. Learn about Nagaoka fireworks and their history.

Nagaoka Tourism Convention

Please contact the association.



Please contact us  
 No regular holiday  
**Please inquire about the facility usage fee.**  
 Varies depending on parking facility  
 2-2-6 Otedori, Nagaoka 0258-32-1187 (Nagaoka Tourism and Convention Association) [info@nagaoka-navi.or.jp](mailto:info@nagaoka-navi.or.jp)



Isoroku Yamamoto Memorial Museum, where you can learn about the Nagaoka air raid and think

about the preciousness of peace

area

Nagaoka



## Touch the charm of "Human Yamamoto Isoroku"

The Yamamoto Isoroku Memorial Hall was built by people who wished to convey the humanity of Yamamoto Isoroku, who lived with a resilient and strong mind in this tumultuous century. While honing his spirit of both literary and military arts, simplicity and sturdiness, and the spirit of Nagaoka, who was always on the battlefield, he was interested in oil and aviation from an early stage. When the war broke out, he demonstrated his foresight to the world. A large number of Isoroku's letters, books, and favorite items are on display, and part of the left wing of the Navy's Type 1 land attack aircraft, which was boarded by 11 people, including Commander-in-Chief of the Combined Fleet, Isoroku Yamamoto (59 years old at the time). Bougainville It is the real thing carried out from the jungle of the island.

### Tour menu

● Tour while listening to a guide (reservation required)



please consult



all year



10:00-17:00

**Closed:** New Year holidays (12/28-1/4) The museum may be temporarily closed due to exhibition changes.

**Admission fee:** Elementary and junior high school students 200 (150 yen High school students and older 500 (400 yen \*Prices in parentheses are for groups of 20 or more \*Free for elementary and junior high school students in Nagaoka City

**Parking lot:** Large buses can use the municipal parking lot / Free (advance application required)

1-4-1 Gofukumachi, Nagaoka City

0258-37-8001 <http://yamamoto-isoroku.com/>

## Nagaoka War Damage Museum

area

Nagaoka



Passing on the story of the Nagaoka air raid and raising interest in peace

Nagaoka City is the only large-scale war-damaged city in Niigata Prefecture. On August 1, 1945, about 80% of the city was reduced to a burnt field by an incendiary bombing by a B-29 of the US military, and 1,488 precious lives were lost. The Nagaoka War Damage Museum is a facility to pass down the story of the Nagaoka air raid without fading, and to pass on the preciousness of peace to the next generation.

### Tour menu

● Viewing of commentary video (approximately 30 minutes) ● Explanation of exhibits (approximately 30 minutes)



Up to 25 people



all year



9:00-17:00 Last admission until 16:30

**Closed:** Mondays (If Monday is a holiday, the following day)

**Admission:** free

**Parking lot:** Large buses can use the municipal parking lot / Free (advance application required)

2-6-17 Jonaimachi, Nagaoka City 0258-36-3269

<https://www.city.nagaoka.niigata.jp/kurashi/cate12/sensai/siryokan.html>

## peace lecture

area

Nagaoka



Nagaoka Air Raid and Isoroku Yamamoto

On August 1, 1945, 1,488 precious lives were lost in an air raid by the US military that lasted 1 hour and 40 minutes, turning 80% of the city into a burnt field. The wish for recovery from the air raids is the origin of the Nagaoka Festival. We will convey the preciousness of peace using images from that time. The lecturer is Mr. Hoshitaka, an adviser to the Nagaoka War Damage Museum. Please contact the Nagaoka Tourism and Convention Association for venue arrangements and fees.



Please contact us



No regular holiday

Please inquire about the facility usage fee.

Varies depending on parking facility

2-2-6 Otedori, Nagaoka 0258-32-1187 (Nagaoka Tourism and Convention

Association) [info@nagaoka-navi.or.jp](mailto:info@nagaoka-navi.or.jp)



## Nagaoka Crested Crested Toki and Nature Learning Center Learn about the ecology and

area

Temple night



environmental conservation of crested ibises and learn

about the relationship between humans and nature

At the observation building "Tokimi-te", you can see the crested ibises raised at the "Distributed Crested Breeding Center" up close. Also next door The "Crested Crested Nature Learning Center", which is in contact with the natural environment through the crested ibis It is established as a place for learning to think about. You can have fun learning at the exhibition corner of real crested ibis feathers and specimens. can.

On the second floor is Teradomari, Nagaoka City, which introduces life in Teradomari in the early Showa period.

There is also a folklore museum. More than 30 types of seasonal local cuisine are constantly on display as food samples.



About 75 people



all year



Open from 9:00 to 17:00  
(admission until 16:30)

Closed Mondays (or the following day if Monday is a holiday), New Year holidays (December 29th to January 3rd)

Admission fee Free for junior high school students and younger High school students and older 100 yen

Free parking for 3 large buses

2829 Natsuto Teradomari, Nagaoka City

0258-75-3201 [https://www.city.nagaoka.niigata.jp/kurashi/cate09/toki\\_gakusyuu/](https://www.city.nagaoka.niigata.jp/kurashi/cate09/toki_gakusyuu/)

## Nitokomieru Hall

area

Temple night



Learn about the structure of the Okozu diversion channel and disaster prevention

You can learn about the construction details and disaster prevention of the Okozu Diversion Canal Rehabilitation Project, which is said to be the "great renovation of Reiwa." Nitoko Concierge

It is possible to explain by video, business explanation by AR / VR, and video experience in the theater room.



About 20 people



all year



9:00-16:00

Regular holiday Every Monday (If Monday is a public holiday, the following weekday)

Admission free

Free parking for 2 large buses

Nozumi Teradomari, Nagaoka City

0258-89-7105 <http://www.hrr.mlit.go.jp/shinano/bunsui/index.html>



# Tour Take a walk through Settaya, a brewing

area

town where you can experience the achievements of local



predecessors and experience the history and culture of Nagaoka . mosqu

## Tour menu

(1) "Fast course" (1 hour course)

Former Kina Saffron Sake Honpo y Koshi no Murasaki y Yoshinogawa Sake Museum Brewery y Fermentation Museum / Rice Warehouse

y "Satisfaction course" (1 hour 30 minutes course)

Former Kina Saffron Sake Honpo y Hoshiroku y Hasegawa Sake Brewery y Hoshino Main Store y Koshi no Murasaki y Yoshinogawa Sake Museum Brewery y Fermentation Museum/Komegura



Up to 15 people accompanied by 1 guide



all year



9:00-17:00

Regular holiday

Sake Museum Jogura and Fermentation Museum/Komegura are closed on Tuesdays 2,000

price

yen per guide for up to 3 hours (up to 15 people) All courses depart

Meeting/dissolution

from and arrive at the Komegura parking lot. parking

parking

lot)

Nagaoka Civic Center 2F, 2-2-6 Otedori, Nagaoka

0258-32-1187 (Nagaoka Tourism and Convention

Association) [info@nagaoka-navi.or.jp](mailto:info@nagaoka-navi.or.jp)

area

# Nagaoka Town Historical Walk "Nagaoka Tourism Volunteer Guide



"

## Tour menu

1. "The Last Samurai Pass" (3-hour course) Earthen mound piles at Nagaoka

Castle Moat y Nagaoka Castle Ninomaru Monument y Monument of One Hundred Sacks of Rice (the site of Kokukan School) y Watarimachi River Watarai y Bell of Saifuku-ji Temple y Nagaoka Air Raid Monument of the center of the bombing y Kawai

Tsugunosuke Memorial Museum y "One hundred

sacks of rice" (3-hour course) Shofukuji Temple (temporary school building of Kokukan School) y Kokokuji Temple (grave of Sick Kobayashi) y Monument of 100 sacks of rice (Kokukan School) site) y Eiryo-ji Temple (a monument to Kobayashi Torasaburo) \* If you have a car, go to HIVE

Nagaoka and see a group of 100 sacks of rice y "Nagaoka Air Raid" (3-hour course)

Shofuku-ji Temple y Kakigawa y Sakon Bank y Yanagihara Park (Shinmei Shrine: Kakigawa War Martyrs Monument) y Hirakata Park (Hirakata Park: Nagaoka War Victims Memorial Tower) y Peace Forest Park y Meiji Park: Nagaoka Air Raid Bombing Monument at the central point y War Damage Museum 4- "Town History Walk" (3-

hour course) Earthen mound piles at Nagaoka Castle moat ruins

y Nagaoka Castle ruins y Monument of 100 sacks of rice y Watarimachi Kawawatari ruins y Ote Ohashi Bridge right bank south side y Nakajima West Army Landing Monument y Bell of Saifuku-ji Temple y Monument of Nagaoka Air Raid Bombing Center y Soroku Yamamoto Memorial Park y Kawai Tsugunosuke Memorial Hall y Eiryo-ji Temple



Up to 15 people accompanied by 1 guide



all year



9:00-17:00

Regular holiday

None

price

Guide 2,000 yen per person for up to 3 hours (up to 15 people) Facility entrance fee is required separately

Meeting/dissolution

All courses depart from and arrive at Nagaoka Station (Ote Exit/East

parking

Exit) Large buses can use the municipal parking lot/free (prior application required)

Nagaoka Civic Center 2F, 2-2-6 Otedori, Nagaoka City

0258-32-1187 (Nagaoka Tourism and Convention

Association) [info@nagaoka-navi.or.jp](mailto:info@nagaoka-navi.or.jp)





## Kawai Tsugunosuke Memorial Hall

area

Nagaoka



Remembering the great achievements and life of Tsugunosuke

At the Kawai Tsugunosuke Memorial Museum, which stands on the site of Kawai's residence, you can remember the great achievements and life of Tsugunosuke through various exhibits and panels. In addition, in the garden that can be viewed from the exhibition room, there are two pine trees that were transplanted from Tadami-cho, the place where Tsugunosuke died, as well as a washbasin and a stone lantern that remain from those days.

## Tour menu

● Commentary by a guide (advance reservation required)



40 people  
(reservation required)



all year



Open from 10:00 to  
17:00 (admission until 16:30)

Closed December 28th to January 4th of the following year (may be temporarily closed)

Admission fee Elementary and junior high school students 100 (80) yen High school and university students 150 (120) yen Adults 200 (160) yen \*Prices in ( ) for groups of 20 or more

Parking lot Large buses can use the municipal parking lot / Free (advance application required)

1675-1 Nagamachi Nagaoka, City 0258-30-1525

<https://tsuginosuke.net/>

## Nagaoka City Hokuetsu Boshin War Lore Museum Director

area

Oka



Learn the history of the recapture of Nagaoka Castle in the Hokuetsu Boshin War

It introduces the Hokuetsu Boshin War, great men, history and culture as seen from the Shingumi area. Don't miss the restored model of the "Yonkoyama Cannon" used in the Battle of Hokuetsu Boshin, the Hachichogata Lagoon that can be seen from the balcony on the second floor, and the model that reproduces the recapture of Nagaoka Castle and the subsequent fall of the castle, as well as the audio commentary.

## Tour menu

● Commentary by a guide (advance reservation required)



About 30 people



all year



10:00-16:00

Closed Mondays, Fridays, 12/1-3/31

Admission free

Free parking for 2 large buses

39-2 Daikokucho, Nagaoka City

0258-21-2688 <https://www.museum.city.nagaoka.niigata.jp/>

## Nagaoka Local History Museum

area

Nagaoka



Tsugunosuke Kawai, Torasaburo Kobayashi, Yoko Sugimoto, Isoroku Yamamoto, and others who built

Nagaoka's culture and learned about the achievements of

local predecessors who were active from the early modern period to the modern era. It introduces people. There are also exhibits of folklore materials related to the snow season in the snow country. From the observatory on the 4th floor, you can see the Niigata Plain.

## Tour menu

● Staff commentary available (advance reservation required)



30 to 40 people  
\*Negotiable



all year



Open from 9:00 to 17:00  
(admission until 16:30)

Closed Mondays, the day after a national holiday, December 28th to January 4th of the following year

Admission fee Elementary and junior high school students 150 (110) yen High school students 200 (150) yen Adults 300 (230) yen

Parking lot 5 large buses Free (use Yukuizan Park parking lot)

80-24 Miyama-cho, Nagaoka City

0258-35-0185 <https://www.city.nagaoka.niigata.jp/shisetsu/bunka/kyoudo.html>

## Lord of Nagaoka Domain Director of the Makino Family Archives

area

Oka



Experience the history and culture of Nagaoka with the Makino family, the lords of the Nagaoka domain

Using the keyword "Makino family, the lord of the Nagaoka domain," we introduce the historical and cultural characteristics of early-modern Nagaoka. Don't miss the "Restored Model of Nagaoka Castle", the "Restored Model of the Third Floor" equivalent to the castle tower, and items related to the Makino family and retainers of the domain.



About 30 people



all year



9:00-17:00

Closed 1st and 3rd Mondays, next year (12/28-1/4)

Admission free

Free parking for 5 large buses

2-1-1 Saiwaicho, Nagaoka City Saiwai Plaza 3F

0258-32-0546 <https://www.museum.city.nagaoka.niigata.jp/>



Experience the achievements of local predecessors and the history and culture of Nagaoka

## Yamakoshi bullring area



Nationally Designated Important Intangible Folk Cultural

Property, Yamakoshi "Ushi no Tsunotsuki"

Yamakoshi's "Ushi no Tsunotsuki" is said to have taken root as an entertainment in the close relationship between people and cows that were kept in each household as valuable workers in transportation and agriculture since ancient times. Echigo's 'Ushi no Tsunotsuki' is characterized by the fact that the cows are tied so that they don't get hurt. It is also worth seeing how the men called Seko push their horns together and squeeze between the cows as they clash violently. Special events can be held exclusively for groups.

1,500 people Any number of people possible

May to November

Reservation required

Regular holiday reservation system

---

included) 2 races approx. 40 minutes 88,000 yen (tax included) 3 races approx. 60 minutes 121,000 yen (tax included)  
 Extraordinary holding Regular holding Honbasho approx. 120 minutes 2,500 yen per person (individual) 2,000 (group)

---

Free parking for over 10 large buses

📍 Yamakoshi Minamidaira, Nagaoka City  
 📞 0258-59-3933 <https://nagaoka-navi.or.jp/event/1985>

## Yoita Museum of History and Folklore area



At this museum, you will find a bronze statue of Kanetsugu Naoe, the wise general of the Uesugi family, and Seibeï Nakagawa, the father of Japanese beer. In the "Life of Seibeï Nakagawa" section, Japan's first beer brewer who trained in Germany, panels and DVDs introduce his career and achievements. In addition, the huge canned beer object of "Niigata Limited Beer Flavored Refreshing Nishite" named after Seibeï is recommended as a photo spot.

About 100-150 people

all year

9:00-17:00

Closed Mondays, New Year holidays (December 28-January 4)

---

Admission fee Elementary and junior high school students 150 (100) yen High school students and above 300 (250) yen  
\*Prices in parentheses are for groups of 10 or more

---

Free parking for 3 large buses

📍 4356 Yoita Otsu, Yoita-cho, Nagaoka City  
 📞 0258-72-2021 <https://www.city.nagaoka.niigata.jp/shisetsu/bunka-y-minzoku.html>

## Ryokan no Sato Art Museum area



A museum located in Wajima, where Ryokan spent his later years

The museum exhibits a large number of books and poetry by Ryokan and his beloved disciple Teishinni, as well as works by other writers and artists associated with him. There is a video room where you can easily learn about Ryokan, and a corner where you can try calligraphy and origami for free.

15 people

all year

9:00-17:00

Regular holiday 12/29-1/3 (There are temporary holidays.)

---

Admission fee Elementary and junior high school students 300 (200) yen High school students 500 (400) yen

---

Parking for 10 large buses available (in front of Yasuragiya) free of charge

📍 3938 Shimazaki, Nagaoka City  
 📞 0258-74-3700 <https://motenashiya.com/museum/>

## Kikumori Memorial Art Museum area



Nurture your expressiveness and creativity by carefully appreciating the works. This museum displays sculptures and paintings collected over many years by Mr. Yoshio Kikumori, who was born in Niigata Prefecture. You can get an overview of the genealogy of modern Japanese figurative sculpture, including Rodin, Kotaro Takamura, and Yoshitatsu Yanagihara. Kikumori's thoughtfulness is everywhere, such as the layout where each work can be viewed from a 360-degree angle, the lobby with extravagant marble, and the pebbles that line the approach to the entrance.

15 people

all year

9:00-17:00

Regular holiday 12/29-1/3 (There may be temporary closures.) Elementary

---

Admission fee and junior high school students 250 (150) yen High school students and older 400 (300) yen  
\*Prices in ( ) for groups of 20 or more

---

Free parking for 10 large buses (in front of Yasuragi House)

📍 3938 Shimazaki, Nagaoka City  
 📞 0258-74-3700 <http://www.motenashiya.com>



area

Nagaoka

## Niigata Prefectural Museum of History



## Learn the wisdom of the snow country and the life of the Jomon people

A vast museum with a total area of 10,000 m<sup>2</sup> built on the hills of Sekihara, Nagaoka City. The museum introduces the history and culture of Niigata Prefecture. In the history exhibition, "History of Niigata Prefecture", "Snow and Life", "Rice Making", In the Jomon exhibition, "The world of the Jomon people" and "Exploring the Jomon culture" An exhibition corner has been set up, and visitors can observe with commentary from researchers. The life-size diorama of the Jomon people's life and Gangi Street in the snow country

### Must see.

#### Tour menu

- Tour with commentary "Jomon Culture" "Snow and Life"



There is a limit on the number of people



all year



Open from 9:30 to 17:00

(Ticket sales close at 16:30) Closed on Mondays

(if Monday is a public holiday, the next weekday)

● Junior high school students and younger: Free ● High school and university students: 200 (160)

Admission fee yen ● Adults: 520 (410) yen

Free parking for 5 large buses

📍 1-2247-2 Sekihara-cho, Nagaoka City

☎ 0258-47-6135 <http://www.nbz.or.jp/>

area

Nagaoka

## Umadaka Jomon Museum



## Thinking back to ancient times in the hometown of flames

Guidance facility for the historical site "Umadaka Sanjuinaba Ruins", a large settlement in the Jomon period. It was excavated from the Umadaka Ruins and became the basis of its name.

There are exhibits that show the culture of the Jomon period, centering on Jomon pottery such as flame-shaped pottery such as 'flaming pottery' and crown-shaped pottery.

### It is

#### experience menu

- Magatama making
- start a fire

\*Since the number of people who can teach each course is limited, it is negotiable.



About 60 people (negotiable)



all year



Open from 9:00 to 17:00

(admission until 16:30)

Closed on Mondays (the following weekday if Monday is a public holiday), year-end and New Year holidays

● Free for high school students and younger ● Adults ¥200 (150) \*Prices

Admission fee in parentheses are for groups of 20 or more

Free parking for 3 large buses

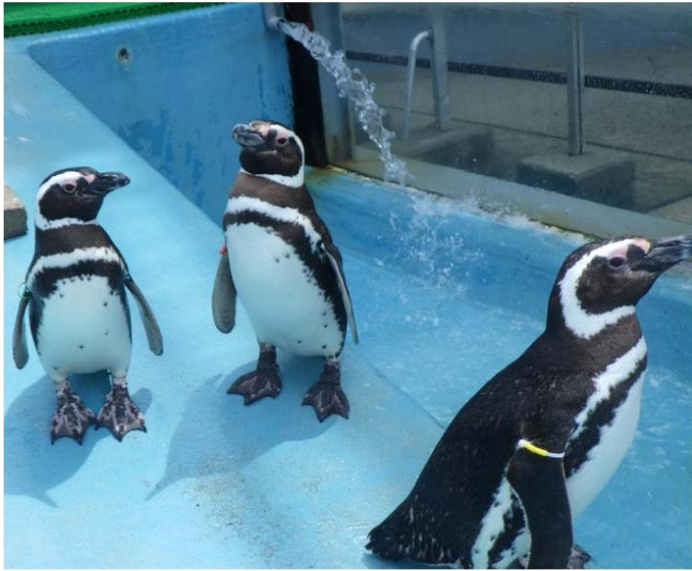
📍 1-3060-1 Sekihara-cho, Nagaoka City

☎ 0258-46-0601 <http://www.museum.city.nagaoka.niigata.jp/umataka/>





predecessors and the history and culture of Nagaoka **Observe** area  
Temple night



and enjoy learning about rare fish and natural creatures

from around the world

About 10,000 rare fish from around the world of about 300 species are on display. Since our hotel is surrounded by the sea, You can enjoy various natural creatures such as black-tailed gulls, many small fish, and seaweed in addition to the creatures raised in the museum. From the observatory, you can see the Sea of Japan and even Sado Island on a clear day.

For school-related groups, "Tanken notebook" (animal breeding in the museum) A worksheet for finding the name of a fish (can be downloaded from the website of the Teradomari Aquarium)" and programs such as question times. I mean.



**Area** About 100 people **Accession period** all year **Business period** Open from 9:00 to 16:30 (Last admission 16:00)

**Irregular holidays**

**Admission fee** Infants 200 (150 yen) Elementary school students 350 (250 yen) Junior high school students 450 (300 yen) Adults 700 (500 yen) \*Prices in parentheses

are for groups of 20 or more .  
9353 Hanatate Teradomari, Nagaoka City 158  
0258-75-4936 <http://www.aquarium-teradomari.jp/>

Nagaoka City Science Museum Director Oka area



Learn about Nagaoka's houses, nature, and people's lives

"Nagaoka no Oitachi - Natural History and History" introduces the geology and history of Nagaoka, and "Nagaoka no Oitachi" introduces the living creatures and people living in the mountains, plains and coastal areas along the Shinano River. Sugata" and "Exhibition of important cultural properties and donated materials". At the entrance of the museum, the 8-meter-long model of a sea cow restored from a 2-million-year-old fossil is impressive.

**Tour menu** ● Tour with commentary by a curator (consultation required in advance)

**Area** About 30 people (please contact us) **Accession period** all year **Business period** 9:00-17:00

**Closed** 1st and 3rd Mondays, New Year holidays (12/28-1/4)

**Admission free**

**Free parking** for 5 large buses

2-1-1 Saiwaicho, Nagaoka City Saiwai Plaza 1F  
0258-32-0546 <https://www.museum.city.nagaoka.niigata.jp/>

Niigata Prefectural Museum of Modern Art area  
Nagaoka



In addition to domestic works that give insight into the modern trend, centered on the "Taiko Collection" by

local collectors who come into contact with art in a museum surrounded by nature and hone their sensibilities, there are also works from the Barbizon School, which is deeply involved in modern Japanese art . It collects 19th century Western art, such as the Nabi school, and introduces it through collection exhibitions and special exhibitions. This is an art museum where you can relax and enjoy art in the nature of the four seasons.

**Tour menu** ● Museum staff commentary on exhibited works (reservation required)

**Area** Prior consultation required **Accession period** all year **Business period** 9:00-17:00

**Closed on Mondays** (If Monday is a national holiday, the museum will be open and closed on the following weekday), exhibition replacement period, year-end and New Year holidays . Pre-registration is required. Please see our website for details. **Free parking** for 4 large buses

3-278-14 Chiaki, Nagaoka City 0258-28-4111  
<https://kinbi.pref.niigata.lg.jp/>



area

Nagaoka

## Niigata Prefectural Museum of History



### Learn the wisdom of the snow country and the life of the Jomon people

At the Niigata Prefectural Museum of History, you can experience combining various activities according to the length of your stay and the age of your child. In addition to a hands-on experience menu such as making Magatama, you can learn about the history of Niigata Prefecture and how the world of the Jomon people was created through CG images. By combining [exhibition commentary], [hands-on activities], and [video viewing], we will provide a more meaningful and wide-ranging learning experience.

#### experience menu

- Magic ball making (50 minutes, up to 40 people at a time)
- Experience with snow tools (30 minutes, up to 15 people at a time)
- Old-fashioned play experience (30 minutes, up to 15 people at a time)



There is a limit on the number of people



all year



Open from 9:30 to 17:00 (ticket sales until 16:30)

Closed Mondays (if Monday is a public holiday, the next weekday)

Admission fee Junior high school students and younger: Free High school and university students: 200 (160) yen Adults: 520 (410) yen \*Prices in parentheses are for groups of 20 or more . free of charge

Free parking for 5 large buses

1-2247-2 Sekihara-cho, Nagaoka City

0258-47-6135 <http://www.nbz.or.jp/>

area

Nagaoka

## National Echigo Hillside Park



### Enjoy various experiences and seasonal flowers in the largest field on the Sea of Japan

At Echigo National Government Park, which has a vast area of 398ha, you can enjoy various sports and recreational activities. You can also enjoy nature walks in the garden where beautiful flowers bloom every season. In the hands-on classroom, you can experience life in Satoyama and observe living things and plants.

#### experience menu

[Click here for details](#)



Limited number of participants



all year



9:30-17:00

(9:30-17:00 from March to October)

Closed: Irregular holidays, Mondays from January to March

Admission fee Junior high school students and younger: Free High school students and older: 450 (290) yen \*Prices in parentheses are for groups of 20 or more

\*Admission is free from December to March Satoyama Experience

Program costs extra Parking lot : 18 large buses Fee: 1,050 circle

Miyamoto Higashikatamachi, Nagaoka City

0258-47-8001 <https://echigo-park.jp/>



Cultivate a sense of solidarity with friends through **experiential** outdoor activities and experience industrial technology

### Nishikigoi contact experience (Amayachinoyu campsite)

area  
Yamakoshi



Get in touch with the Japanese beauty and ornamental fish "Nishikigoi" that you can't usually touch

At Yamakoshi, the mecca of swimming jewels "Nishikigoi", you can experience the work of a Koi master and experience the experience-based travel content where you can interact with Nishikigoi.

| experience menu  |  |
|--|--|
| ● Raising (capturing) Nishikigoi with a seine, etc. Appreciating |  |
| ● Nishikigoi that have been caught                               |  |
| ● Bathing in Amayachi no Yu                                      |  |

Up to 30 people per group
 From early June to late October Closed
 Available during business hours at your desired time

Tuesdays (Amayachi no Yu) Experience fee: 50,000 yen per group Parking for large buses available Free

Near 4526 Yamakoshitane, Nagaoka City (Amayachi no Yu) 0258-59-2343 (Yamakoshi Tourism Association) <https://nagaoka-navi.or.jp/event/42466>

### Zhongshan Tunnel

area  
Yamakoshi



Experience precious civil engineering heritage dug by hand

A tunnel with a total length of 877m was dug by local residents over a period of 16 years from 1933 (Showa 8). It is the longest hand-dug tunnel in Japan, and for 50 years until the Nakayama Tunnel was completed in 1998, it supported people's lives as a community road. It is also certified as a civil engineering heritage recommended by the Japan Society of Civil Engineers as the longest hand-dug tunnel in Japan. \*You can observe up to 70m from the entrance on the Yamakoshi side.

50 people
 May to November
 open all year round

Closed Winter period Admission fee Free tour Free parking for 2 large buses

Nagaoka City Yamakoshi Higashitakezawa (Komatsukura) ~ Uonuma City 0258-59-2343 (Yamakoshi Tourism Association) <https://nagaoka-navi.or.jp/spot/5997>

### "Tsutsuki Beef" contact experience

area  
Yamakoshi



Feel the history of 1000 years of traditional culture

Bullfighting in Yamakoshi has a long history and is said to have originated 1,000 years ago. Cattle were used for cargo handling and farming in rice fields, but they were strong and resistant to cold and hunger, and were essential to human life in a land with a harsh natural environment. Villagers gathered together with the cows they lived with, and before they knew it, competing with their proud cows became a major pastime of the village. Two giant oxen have their horns together in a violent contest of strength. Along with the enthusiasm, please feel the pride of the region that has been handed down for over a thousand years.

1 to 15 people
 all year
 9:00-17:00

Regular holiday Necessary consultation fee 3 people or more 2,400 yen per person (tax included) (minimum charge 8,000 yen) Venue Yamakoshi Fureai cowshed Time required 30 to 45 minutes Parking lot 2 large buses Free of charge

Yamakoshi Mushigame 3373-1, Nagaoka City 0258-59-2308 (Yamakoshi Agricultural Stay Promotion Council) <https://yamakoshi.place/ja/>

### Learn about Nishikigoi

area  
Yamakoshi



Experience the unique culture of Nishikigoi, the national fish of Japan

Yamakoshi is known as the largest Nishikigoi production area in Japan. Nishikigoi was certified as the national fish on October 25, 2022. In Yamakoshi, Japanese carp have been bred for food since ancient times. One day, a magoi with bright red spots was discovered, and since then it has been improved and researched by koi breeders. In this program, a tour guide will guide you to a local Koi farmer, and you will be able to observe Nishikigoi farming, listen to the words of the Koi farmer who devotes his life to Nishikigoi, and peer into the abyss of the world.

1 to 15 people
 all year
 9:00-17:00

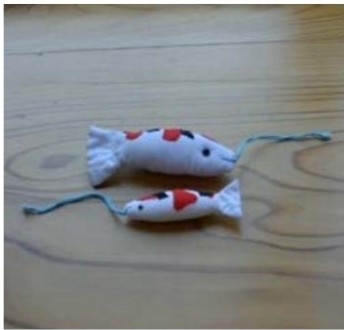
Fee 2,400 yen (tax included) per person for 3 or more people (minimum charge 8,000 yen) Venue Yamakoshi Koi Farm (Venue cannot be specified) Required time 45 to 60 minutes Parking lot 1 large bus Free of charge

Yamakoshi Mushigame 3373-1, Nagaoka City 0258-59-2308 (Yamakoshi Agricultural Stay Promotion Council) <https://yamakoshi.place/ja/>

area

Yamakoshi

## Yamakoshi souvenir making



## Easy handmade experience using the kit

## Menu/price

Acorn strap Time required:

20 minutes Fee: 700 yen (tax included)

Koi-chan strap Time required:

30 minutes Fee: 550 yen (tax included)

POP wood cow making

Time required: 30 minutes Price: 700 yen (tax included)



5 to 20 people (reservation required for 6 or more



all year



9:00-17:00

people) Closed on Mondays (please contact us for more than 20 people)

Experience Venue Yamakoshi Reconstruction Exchange Center Orataru

Duration 30 to 60 minutes

Free parking for 8 large buses

2835 Takezawako, Yamakoshi, Nagaoka City 0258-41-1203 (Yamakoshi Reconstruction Exchange Center Orataru) <https://reserve.orataru.net/>

area

Yamakoshi

## Yamakoshi "food" making experience



Using ingredients from Yamakoshi, you can make soba, udon, rice cakes, and local dishes, and eat them freshly made. The food we make ourselves is excellent.

## Menu/number of people accepted/time required/price

Soba making

1 to 10 people 160 minutes 8,500 yen Minimum charge 26,000 yen (tax included)

Udon making 1

to 10 people 160 minutes 8,500 yen Minimum charge 26,000 yen (tax included)

Mochi

making 1 to 15 people 180 Minutes 14,000 yen Minimum charge 45,500 yen (tax included) Making

local cuisine 2 to 10 people 120 minutes 4,000 yen Minimum charge 13,000 yen (tax included)



all year



9:00-17:00

Regular holiday required

consultation meeting Bayamakoshi log

exchange building Parking lot 1 large bus Free of charge

Yamakoshi Mushigame 3373-1, Nagaoka City 0258-59-2308 (Yamakoshi Agricultural Stay

Promotion Council) <https://yamakoshi.place/ja/>



area

small country

### Oguni Washi Production Association



## Experience handmade Japanese paper with a history of over 300 years

We produce Japanese paper by self-cultivating kozo, the raw material of Japanese paper. You can try your hand at making Japanese paper or making your own using Japanese paper.

#### experience menu

- Paper-making experience 20 people (40-60 minutes) 800 yen You can experience traditional handmade Japanese paper. (The paper will be sent after drying.)
- Koandon making 15 people (20 minutes) 1,200 yen Choose one from four shapes and make "koandon" using colored and patterned washi
- paper. . Japanese paper fan making 15 people (30 minutes) 1,000 yen Make a paper fan by pasting Japanese paper on a bamboo bone and decorating it with cut paper.

\*Other experience menus are also available. If the number of participants exceeds the capacity, it can also be held at the Oguni Forest Park Minna no Taikenkan. Please contact us.



20 people



all year



9:00-16:00

(closed on Wednesdays)

Regular holiday Irregular

holiday It depends on the content of the experience fee

Free parking for 2 large buses

145 Oguriyama, Oguni-cho, Nagaoka City

0258-41-9770 <https://www.oguniwashi.com/>

area

### Oguni Forest Park Minna no Taikenkan Small Learning about local techniques such as local cuisine and handicrafts



It is a complex public facility with a forest campground, "Minna no Taikenkan", and a day-trip bathing facility "Yorakukan" in an 80ha satoyama. At the "Experience Hall for Everyone", you can experience various things

#### experience menu

- Soba making Natural wreath making Botanical candle
- glass Ritzen Stencil dyeing Bengara dyeing

Click here for details



20 people



all year



10:00-17:00

Closed on Wednesdays (the next day if it falls on a holiday), December 31st to January 2nd

It depends on the content of the experience fee

Free parking for 5 large buses

208 Kamiwata, Oguni-cho, Nagaoka City

0258-95-3161 <https://www.ogurin-park.com/>

# UNEHAUS

area  
Tochio



## Feeling the importance of life through direct contact with farm work and harvesting

Tochio's community activity support center Une House.

People with disabilities can live independently with pride through agricultural work.

This facility was established with the aim of providing

### experience menu

- Agricultural experience Rice farming (rice planting, mowing, rice harvesting, etc.) Field farming (seeding, mowing, harvesting, etc.)
- An experience program where you can harvest, cook, and taste various kukai and kukai (mountain vegetable kukai, mushroom kukai, buckwheat kukai, etc.)



About 40 people



May to October



consultation required

Regular holiday(Saturdays, Sundays, and holidays)

Experience fee negotiable

Free parking for 3 large buses (widened part of the old road on the shoulder)

869 Ichinogai, Nagaoka City

0258-86-8121 <https://une-aze.com/>

## Large lotus root harvesting experience

area  
Nakanoshima



## Experience the difficulty of farm work and the joy of harvesting, and learn about the local food culture

Participants harvest lotus roots from lotus root farmers at Oguchi lotus root collection point

After receiving an explanation of the precautions to be taken at the time, head to the field where the experience will be held. In the field, they wear rubber boots and divide into groups of 3 people per instructor and harvest while learning tips on harvesting experience.

(For harvesting, remove the mud from the top with a digging machine in advance, then dig and keep it empty)



consultation required



September to October



Open from 9:30 to 12:30  
(consultation required)

Experience fee negotiable

Free parking for 2 large buses

3-2 Oshikiri Shinden, Nagaoka City 0258-61-2013 (Nagaoka City Nakanoshima Branch Industrial

Construction Section) <http://www.city.nagaoka.niigata.jp/>



area

Tochio

industrial technology



## Campsite to enjoy the sky and wind

The Doin Plateau is located at an altitude of 600m on the slopes of Echigo's famous Mt. Morikado. A camp field surrounded by rich nature, it is a beautiful plateau in the Tochio district that has been selected as one of Niigata Prefecture's top 100 forest bathing destinations. During the day you can feel the breeze blowing through the plateau, and at night you can enjoy the twinkling stars that fill your field of view.

### experience menu

- Canoe experience, Baumkuchen making, firewood chopping, walk rally (40 to 50 people divided into teams and experience rotation)
- Barbecue camp, campfire (In case of rain, 27 people at accommodation lodge Doin + evacuation shelter) 20 people) Canoe set ¥80,000, Baumkuchen making ¥800, Wood splitting fire ¥500



40 people



May to October



9:00-17:00

Regular holiday Weekdays\*Open with reservation

Please contact the facility for usage fees

Free parking for 3 large buses  
8092 Tochio, Nagaoka  
0258-58-2120 <http://www.tochio.net/doin/>

area

Tochio

Savor a sense of accomplishment through the

hands-on menu creation experience in the Tochio area



### experience menu

- Tochio Temari Making Experience  
80 people In Tochio, where sericulture and weaving were once popular, temari making was popular as lucky charms and gifts. The grandma of the Tochio Temari Association will kindly and carefully guide you and you can experience making Temari with a diameter of about 4 cm in 90 to 120 minutes.
- Handkerchief dyeing experience 40 people Handkerchiefs will be dyed using tie-dyeing or board-dyeing using a technique called tate-zome, which uses only water without the use of fire.
- Old-fashioned games such as folktales and beanbags 40 people Listen to Tochio's folktales and enjoy old-fashioned games such as beanbags and cradles with the Tochio Robatakai grandma. Scrap Aquarium Seiya Kaji workshop 80 people \*Coordinated by Tochio Tourist Association To do.



Limited number of people depending on the content



all year



9:00-17:00

Closed on Mondays (open if reserved)

Experience fee Please contact the Tochio Tourism Association

Association Parking lot 4 large buses Free

1765 Tochio Miyazawa, Nagaoka City 0258-51-1331 <http://>[park8.wakwak.com/~orinasu/](http://park8.wakwak.com/~orinasu/) Inquiries Tochio Tourism Association

0258-51-1195

info@tochiokankou.jp



Teradomari Beach Sports Court area  
Temple night



teamwork by having fun on the wide sandy beach

Opened at Teradomari Central Beach in Teradomari for a limited time from July to September. The area is the size of four beach volleyball courts, and in addition to beach volleyball, beach tennis and beach soccer can also be used. There is also a free rental of equipment.



**experience menu**

- Beach sports experience (beach volleyball, beach tennis, beach soccer, beach flags, sumo wrestling, beach sun tossing, tag, dodgeball)

Any number of people    
 acceptance period July to September    
 Business period 9:00-16:00  
 Closed mid-June to end of September Open **everyday**  
 Free of charge Consultation required if you need an event instructor  
 Free parking for 10 large buses  
 Teradomari Central Beach 0258-86-6719  
 (Teraspo!) <http://teraspo-sc.com/>

Teradomari Seaside Park Multi-Purpose Plaza Teradomari area



Deepen ties with friends through sports while feeling the breeze from the Sea of Japan

Enjoy soccer, rugby, tag, ground golf, and ultimate using Frisbee on the beautiful artificial turf installed on the beach adjacent to the Sea of Japan. (Prices vary depending on content. Consultation required)

Any number of people    
 acceptance period all year    
 Business period 9:00-16:00  
 No regular holiday  
 Please inquire as it varies depending on the content of the usage fee.  
 Free parking for 10 large buses  
 9777-1 Sakaicho, Teradomari, Nagaoka City 0258-86-6719  
 (Teraspo!) <http://teraspo-sc.com/>

Canoe experience area  
Temple night



Set out on the sea of Teradomari and nurture strength in the midst of nature

You can experience the unique atmosphere of the sea, the calmness of the waves, and the coolness of the blue sky.

**experience menu**

- From a lecture on how to paddle, to a canoe experience

About 20 people    
 acceptance period June to September    
 Business period Respond at desired time  
 Regular holiday (Saturdays, Sundays, and holidays)  
 Price 1 person 2,000 yen  
 Parking Lot Large buses are not allowed Forwarded to the aquarium parking lot  
 Teradomari Matsuzawa-cho, Nagaoka City 0258-86-6719  
 (Teraspo!) <http://teraspo-sc.com/>





area

river mouth

## Echigo Kawaguchi Yanaba "Otokoyama Fishing Ground"



A power spot over the clear Uono River !  
Learn traditional fishing methods at Yanaba, which boasts the oldest history and scale in Japan

"Kawaguchi Yanaba Otokoyama Gyoba", which is popular as a summer cool spot, is built on the clear stream of the Uono River and boasts the oldest tradition

and scale in Japan. Catch sweetfish, yamame trout, and carp dancing on the drainboard while splashing vigorously with your bare hands. The caught river fish is slowly grilled over charcoal, and you can eat piping hot grilled sweetfish and ayu-meshi while enjoying the refreshing river breeze.

### experience menu

- Yanaba fishing experience Fee: Free However, caught fish will be collected



Top 20



Year-round acceptance period (closed in winter)



9:00-17:00

No regular holiday

Venue Echigo Kawaguchi Yanaba

Experience fee

consultation required Parking lot 2 large buses Free of charge  
1034-5 Nishikawaguchi, Nagaoka City



0258-89-3104 <https://www.city.nagaoka.niigata.jp/kankou/asobu/taiken/kawa-yanaba.html>

area

river mouth

## Experience Exchange Center "Mori no Katarai" Enjoy



music without worrying about the surroundings at a facility specializing in concert performances with the magnificent Echigo Sanzan in the background

You can enjoy practice and recitals of piano (Bechstein piano), guitar, trumpet, dance, etc. without worrying about the surroundings. It can also be used as a classroom for circle groups.

Equipment Hall (capacity 250), art gallery, workroom, meeting area, piano (Bechstein piano), broadcasting equipment, whiteboard



250 people



all year



10:00-22:00

Closed Tuesdays New Year holidays (12/29 - 1/3)

Usage fee (upper row is for people outside the city, lower row is for people in the city)

|             | Basic usage fee (up to 4 hours) |                      | Additional usage fee (per hour) |                      |
|-------------|---------------------------------|----------------------|---------------------------------|----------------------|
|             | Usage fee                       | Air conditioning fee | Usage fee                       | Air conditioning fee |
| hole        | ¥13,650<br>¥630                 | ¥2,100<br>¥100       | 3,410 yen<br>25 yen             | 525 yen<br>78 yen    |
| work room   | ¥2,040<br>¥420                  | ¥310<br>¥100         | 100 yen<br>158 yen              | 25 yen<br>130 yen    |
| art gallery | ¥4,090<br>¥520                  | ¥630<br>¥100         |                                 |                      |

Parking lot 4 large buses Free of charge

2538-12 Yamakawaguchi Nakayama, Nagaoka



City 0258-81-4404 (Kawaguchi Regional Exchange Experience Center) 0258-89-3111 (Kawaguchi Branch Regional



Development and Citizen Life Division) <https://www.city.nagaoka.niigata.jp/shisetsu/kouminkan/kawa-kouryu.html>



Shop Learn about regional specialties and traditional items

Roadside Station Nagaoka Fireworks Museum

**Echigo Nagaoka Tribute Shop**

area  
Nagaoka



A souvenir shop where you can find special items from Echigo Nagaoka, mainly from Nagaoka. We carry a variety of products, from local foods to local sake.

Business period 10:00-19:00

Regular holiday 12/31-1/2 •Facility inspection days (twice a year) Parking lot for 282 vehicles (including 18 large vehicles) Free

707 Kita-cho, Nagaoka City 0258-89-6845

<https://nagaoka-hanabikan.niigata.jp/>

**CoCoLo Nagaoka**

area  
Nagaoka



At CoCoLo Nagaoka, which is adjacent to Nagaoka Station where you can enjoy shopping in the Nagaoka Station building, we have a wide variety of souvenirs unique to Nagaoka and Niigata, such as "rice", "famous confectionery", and "specialties".

Business period •Shopping floor 10:00-19:30 •Food hall 10:00-20:00 •Restaurant floor 10:00-22:00

\*Please see the website for details. Parking lot

\*Please contact us

Closed three times a year

1-611-1 Jonaimachi, Nagaoka City 0258-367770

Road Station Ryokan no Satowashima

**Regional Exchange Center Motenashiya Wajima**

area



A community exchange center in a 180-year-old old private house that you can feel the heart of Mr. Ryokan, who was loved by people and lived in nature . There is a restaurant where you can enjoy local cuisine and sweets that are only available at roadside stations, as well as a product corner where you can find all the special products of the area.

Business period 9:00-17:00

Closed: 1st Monday of the month, 12/29-1/2

Parking for 10 large buses Free of charge

5713-2 Shimazaki, Nagaoka City

0258-41-8110 <http://www.motenashiya.com>

**Road Station R290 Tochio**

area  
Tochio



A roadside station where you can taste Tochio's famous jumbo oil

Food, souvenirs, information, and more about Tochio sightseeing information base!! Tochio Temari, Tochio-produced Koshihikari, famous confection Marudai, local sake, and other Tochio souvenirs. You can enjoy freshly fried Tochio specialty "Aburage" (fried tofu).

Business period 10:00-18:00

Regular holiday New Year's

holiday Parking lot 7 large buses Free of charge

1764 Tochio Miyazawa, Nagaoka City

0258-77-0100 <https://r290tochio.jp/>

**Teradomari Fish Market Street**

area  
Temple night



Fish Ameyoko

The fish market street is lined with fresh seafood from the Sea of Japan and seasonal flavors. It has an established reputation for its freshness and low prices, and the wide selection of products unique to a port town. Feel the sea breeze and enjoy the Sea of Japan while stuffing your mouth with hamayaki.

Business period 8:30-17:00

Open all year round

Parking lot 30 large buses free of charge

9353-527 Teradomari Omachi, Nagaoka Teradomari Tourism Association

0258-75-3363 [tera@niigata-net.or.jp](mailto:tera@niigata-net.or.jp)

**Road Station "Echigo Kawaguchi" Aguri no Satokawa Exit**

area



An interesting farmer's market with a local flavor with unique producers

A roadside station with fresh vegetables and products picked every morning from Echigo-Kawaguchi, as well as local processed agricultural products that can only be purchased at Aguri no Sato. You can purchase freshly steamed hot bamboo dango from one piece.

Business period Open from 9:00 to 18:00

Regular holiday 1st, 3rd, 5th Tuesday (every Tuesday from (closes at 17:00 from December to March) December to March) Parking for 4 large buses Free

84-2 Kawaguchi Nakayama, Nagaoka City

0258-89-4550 <http://agrinosato.com>



# Hotel New Otani Nagaoka

area  
Nagaoka



## Smart table manners

The instructor will guide you through the full course of French cuisine.

I will

These are the manners you should learn in your student life.



### menu

- Bento style 3,300 JPY
- Set menu 4,400 yen ~ Table
- manners 5,500 yen



374 people ( 220 people in Shiratori Room . 63 people in Kashiwa Room, 42 people in Yukitsubaki Room)

No fixed holidays

Parking lot 2 large buses Price 2,400 yen per car (tax included) Additional arrangements possible

2-8-35 Daimachi, Nagaoka City

0258-37-1212 <http://www.nagaoka-newotani.co.jp>

# Nagaoka Grand Hotel

area  
Nagaoka



## Lesson while enjoying the taste of the hotel

The instructor will guide you through the full course of French cuisine.

I will

These are the manners you should learn in your student

life. Affordable lunches such as steak lunches and Shokado Bento lunches

There is also Chi.



### menu

- Shokado bento 2,200 yen
- Table manners 5,000 yen



380 people (Eternal 280 people, Aoshi 100 people)

No fixed holidays

Parking for 2 large buses Free of charge Additional arrangements possible

1-2-1 Higashisakanouecho, Nagaoka City

0258-33-2100 <https://breezbay-group.com/nagaoka-gh/>



## Pastoral Nagaoka

area

Nagaoka



### A bento box made with local ingredients from Nagaoka

It is located in the city center and is large because there are several large venues.

School acceptance is also possible.

#### menu

- School trip lunch box (1,700 yen) \*Disposable containers are available

Koshihikari / Edamame grown in the prefecture, scrambled eggs with vegetable sauce / Deep-fried large lotus root scissors / Fried shrimp, etc.

- School trip lunch box (2,300 yen with dessert)

Koshihikari rice / Pickles / Deep-fried large lotus root scissors / Deep-fried chicken thigh with persimmon seeds / Tochio fried tofu pizza / Potato salad with Okinawan edamame / Dessert, etc.

\*Some menu items may change due to availability of ingredients. \*Both come with a bottle of tea.

School trip lunch 2,300 yen School trip with dessert lunch 1,600 yen



554 people (20 people in tatami room, 534 people in table seats )

No fixed holidays (closed from 12/31 to 1/3) Parking

for 7 large buses Free Please contact us

📍 2-7-25 Koashiro, Nagaoka City

🌐 0258-35-1305 <http://www.pastral-n.com>

## Yomogihira Onsen Izumiya

area

Nagaoka



### Experience a kaiseki meal in the inner parlor of Nagaoka

We are proud of our local Koshihikari rice cooked in a pot. The seafood

from the Sea of Japan landed at nearby ports and the surrounding mountains are abundant.

A local taste that values the season, using vegetables and edible wild plants that can be harvested in abundance

Enjoy.

#### menu

- Flower basket set meal 4,450 yen (includes bathing fee)



80 (Tsubaki, Chrysanthemum, Kikyo, Yamabuki 40, Hall 40)

Please inquire about regular holidays

Parking lot 4 large buses Free of charge

📍 1508-2 Homagiramachi, Nagaoka City

🌐 0258-23-2231 <https://www.yomogi-izumiya.com/>





# Lunch facility Hotel Sun Roller

area  
river mouth



## Lunch with a view of the confluence of the Shinano River and the Uono River

Access from various directions is possible due to its good access, 10 minutes by car from Kawaguchi IC on the Kanetsu Expressway, and when using the adjacent Kawaguchi Sports Park and Morinokatarai-kan. In addition, we offer meals that are particular about local ingredients and located on a hill overlooking the confluence of the Shinano River and the Uono River. I will



### menu

● Japanese and Western Pine Flower Bento 2,200 yen



60 people (Denen-no-ma)

Regular holidays

Irregular holidays Parking lot 3 large buses Free of charge

📍 2515-4 Kawaguchi Nakayama, Nagaoka City

🌐 0258-89-3000 <https://hotel-sunrolla.jp/>

area  
Yamakoshi

## Yamakoshi Bento



## A bento box where you can feel Yamakoshi as it is

It is a catered lunch box born from the heart of local hospitality. oh Local ingredients that use plenty of local ingredients, not to mention rice. Please enjoy our seasonal menus.



### menu

● Yamakoshi bento 1,200 yen (tax included)



5 to 80 people (Orataru 2nd floor large hall or Yamakoshi gymnasium)

Closed on Mondays (Please contact us if the museum is closed) Parking for

5 large buses Free of charge

📍 2835 Takezawako, Yamakoshi, Nagaoka City 0258-41-1203 (Yamakoshi Reconstruction Exchange

Center Orataru) <https://reserve.orataru.net/>

## Stay at Sumiyoshiya-ji Temple

area



Exceptionally fresh seafood procured at auction from the Teradomari Fishery Cooperative

Sumiyoshiya, which has the bidding rights of the Teradomari Fisheries Cooperative, boasts dishes that use plenty of fresh seafood and local ingredients. On sunny days, you can enjoy a unique time in Teradomari while gazing at the magnificent Sea of Japan, including Sado Island. It is recommended for groups who want to fully enjoy Teradomari, with good access to sightseeing spots such as the Fish Market Street and the Aquarium Museum.

### menu

- Chirashizushi/Hamayakizen 1,980 yen



200 people (Main building large banquet hall 100 people, Annex large banquet hall 100 people)

No fixed holidays

Parking for 5 large buses Free of charge

📍 7745-1 Teradomari Omachi, Nagaoka City

📞 0258-75-3228 <http://www.h-sumiyoshiya.net/>

## WajimaTour Le MondeWajima

area



Providing freshly harvested "seasonal" ingredients that we have seen with our own eyes

This is a restaurant in a renovated 85-year-old wooden school building of the former Shimada Elementary School, a chalk school building on a small hill. It is a popular restaurant, so be sure to make a reservation early.

### menu

- Soup, appetizer of the day, homemade bread, fish or meat dish, drink ¥2,530



40 people

Closed on Wednesdays and

Thursdays Parking for two large buses Free of charge

📍 64-1 Wajimanakazawa Otsu, Nagaoka City

📞 0258-74-3002 <http://www.tout-le-monde.com>

## Nakagawa Seibei Memorial BBQ Beer Garden Board

area



Don't worry about the rain! Barbecue empty-handed

Yoita Seibei Nakagawa Memorial BBQ Beer Garden, located in the Yoita area where Seibei Nakagawa, the founding brewer of Sapporo Beer, was the first to master beer brewing methods in Japan, offers authentic barbecues on the latest grills. You can also enjoy seasonal local vegetables such as Niigata Koshihikari rice cooked with firewood and green soybeans. The large tent can be used safely even in rainy weather.

### menu

- Standard course 3,500 yen Nagaoka ingredients course 6,000 yen



120 people

Closed November-March Parking for 3

large buses Free of charge

📍 Yoita Town, Nagaoka City (in Tachibana Park)

📞 0258-41-5600 <https://nagaoka-yoita-beer.jp/>

## Seasonal food, Yudokoro, Inn Kiho Mishima

area



Please enjoy the taste of the season

Located in a place rich in nature with a view of the majestic Higashiyama mountain range, we offer reasonably priced slow food using seasonal ingredients. It is recommended as a lunch facility because it is close to the roadside station "Nagaoka Fireworks Museum" where you can experience Nagaoka fireworks all year round, and it is also easily accessible from the "Nagaoka IC" on the Kanetsu Expressway. Due to the small size of the facility, we cannot accommodate a large number of people, but we are able to meet a wide range of needs.

### menu

- Fried shrimp and fried chicken set meal 1,500 yen



Hanamizuki no Ma 50 people

Closed for maintenance in June and October Parking lot 2 large buses free

📍 6964 Kamiwai, Nagaoka City

📞 0258-42-4126 <https://www.kihou.jp>



# hotel

## Hotel New Otani Nagaoka

area

Nagaoka



315 people



179 rooms

101 rooms with twin + triple  
212 people can stay



Banquet hall, round table or school [Adjusted according to the number of people]

Parking lot 2 large buses 2,400 yen per car (tax included) Additional arrangements possible Location 1 minute walk from JR Nagaoka Station

2-8-35 Daimachi, Nagaoka City 0258-37-1212 <http://www.nagaoka-newotani.co.jp>

Acceptance conditions/Gender-segregated floor charter is possible depending on the number of users. The whole building can be reserved according to the number of guests.



## Nagaoka Grand Hotel

area

Nagaoka



121 people



92 rooms

18 rooms in twin + triple  
Accommodates 39 people

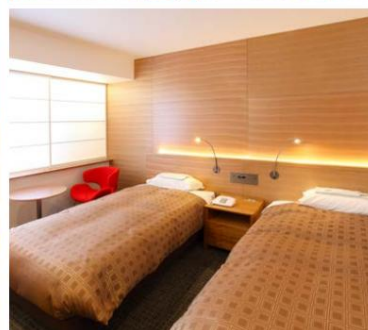


Banquet hall, round table or school [Adjusted according to the number of people]

Parking lot 2 large buses Fee 1,500 yen - 2,500 yen Location 3 minutes walk from JR Nagaoka Station Near Aore Nagaoka

1-2-1 Higashisakanouecho, Nagaoka City 0258-83-2100 <https://breezbay-group.com/nagaoka-gh/>

Acceptance conditions/Gender-segregated floor charter is negotiable depending on the number of users. It is not possible to rent out the entire building.



# Hotel Sun Rolla

area

river mouth



90 people



34 rooms

1 suite room, 27 Western-style rooms, 6 Japanese-style rooms

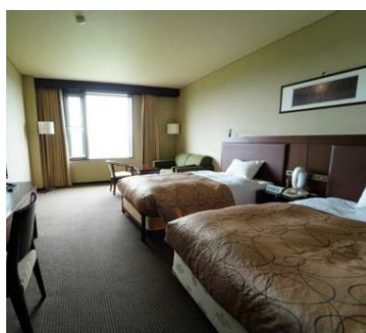


Echigo Kawaguchi Onsen Building 1F Restaurant Kobushi  
Hotel Sun Roller 1F Restaurant Keyaki

Parking lot 3 large buses Free of charge Location 30 minutes by car from JR Nagaoka Station

2515-4 Kawaguchi Nakayama, Nagaoka City 0258-23-3000 <https://hotel-sunrolla.jp/>

Acceptance conditions / The entire building can be reserved for groups of 50 people or more



# Yomogihira Onsen Izumiya

area

Nagaoka



181 people



37 rooms



Banquet room tatami room/face-to-face or school

3 public baths (30 people x 3)

Free parking for 4 large buses Location 30 minutes by car from JR Nagaoka Station

1508-2 Homagiramachi, Nagaoka City 0258-23-1131 <https://www.yomogi-izumiya.com/>

Acceptance conditions/Negotiate if the entire floor is reserved for 60 people or more. Negotiable if the whole building is reserved for 120 people or more







area

Nagaoka

# Hananoyado Yomoyamakan



47 people



13 rooms



Banquet room tatami room/face-to-face or school

2 public baths (for 20 people x 2)

Please inquire for parking Free Location 30 minutes by car from JR Nagaoka Station

130-1 Ko, Homagaira-cho, Nagaoka City 0258-23-2121 <http://www.yomoyama.co.jp/>

Acceptance conditions/floor charter is available according to the number of guests. The whole building can be reserved depending on the number of guests.



area

Nagaoka

# Horaikan Fukubikiya



117 people



23 rooms



Banquet room tatami room/face-to-face or school

2 public baths (10 people x 2)

Free parking for 3 large buses Location 30 minutes by car from JR Nagaoka Station

Ko 1227, Homagaira-cho, Nagaoka City 0258-23-2221 <http://www.fukubikiya.co.jp>

Acceptance conditions/Gender-segregated floor can be reserved for 12 or more people. If you want to reserve the whole building, please consult us for more than 40 people.



area

Temple night

## Delicious Inquirer Sumiyoshiya



110 people

Main building 80  
people Annex 30 people

30 rooms

Main building 23  
rooms Annex 7 rooms

Facing the banquet hall or school

3 public baths Main building (15 people x 1, 10 people x 1), Annex (10 people x 1)

Free parking for 5 large buses Location 40 minutes by car from JR Nagaoka Station

📍 7745-1 Teradomari Omachi, Nagaoka City 0258-46-3228 <http://www.h-sumiyoshiya.net/>

Acceptance conditions / Separate floors for men and women Negotiable depending on the number of people who will use the entire floor. Negotiable depending on the number of people who want to reserve the entire building



area

Temple night

## Hotel Asuka



120 people



31 rooms



Facing the banquet hall or school

2 public baths (for 20 people x 2)

Free parking for 8 large buses Location 35 minutes by car from JR Nagaoka Station

📍 107 Nozumi Teradomari, Nagaoka City 0258-61-6111 <https://www.hotel-asuka.jp>

Acceptance conditions / Separate floors for men and women can be reserved. Negotiable depending on the number of people who want to reserve the entire building

